

Bringing

PIVEN TO LIFE ALL AROUND CAMP



WHAT ARE WE MADE OF?



"David Ben-Gurion and the Many Faces of Israel"
by Israeli Artist, Hanoch Piven



The physical environment of a camp is an essential part of a camper's holistic experience and reflects the character, culture, and values of the camp. An intentional approach to utilizing multiple spaces at camp can provide opportunities for learning to be reinforced across many areas.

While the Piven Workshop is a natural fit for your Arts and Crafts program, we believe that Israel should "live" everywhere, and the five thematic portraits of Ben-Gurion that Piven created can have resonance in many areas around camp.

The large banner that brings all of them together with the question, "What Are We Made Of?" can be placed in a central space in camp and will surely prompt campers and staff to slow down, engage, and discuss. Counselors can bring campers to the banner and pose questions that lead to discussions about their lives, Israel, the place of Israel within them, and more. The smaller individual posters can be displayed in many locations around camp, reinforcing the notion that Israel is an integral part of the camp environment and the learning that undoubtedly will take place in Arts and Crafts.

To guide staff in facilitating meaningful conversations and activities around each of the thematic portraits, we've included reference cards that include content about the theme and suggested discussion questions. Here are a few ideas about where to hang the posters and ways to use them; we're sure you'll have more ideas! Display one or all of the **Ben-Gurion portraits** in a cabin or on the walls of an activity space. If you choose to use one of the portraits, ask the campers what they see, and what they think they can learn from it. If you use the full set, give them time to peruse the portraits before engaging in discussion.

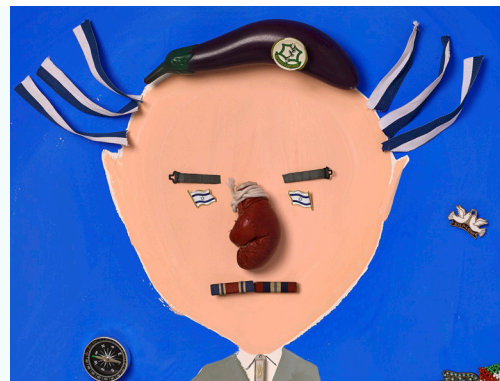
Pioneering חלוציות

The Pioneering portrait can enhance a **gardening** program. Just as campers start a garden from scratch each summer in hopes of harvesting vegetables, the early pioneers in Israel worked the land as they sought to sustain themselves and make the desert bloom.



Leadership מנהיגות

Encourage **CITs** or **junior counselors** to explore the Leadership portrait. How does their transition into staff roles at camp parallel the leadership skills needed in Israel?



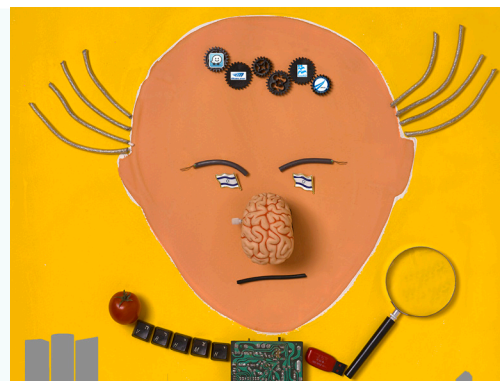
Diversity רב-גונית

The Diversity portrait can adorn a space where campers engage in **social justice** work or plan **volunteer projects** in nearby communities.



Innovation חדשנות

The **pool** or **waterfront** can be an ideal spot for the Innovation portrait. Piven chose to locate this Ben-Gurion on the shores of Tel Aviv's Mediterranean beach; what can campers think about as they swim and play in the water?



Culture תרבות

Hang the Culture portrait in the **dining hall** or **library**, and encourage campers to think about the elements that come together to create camp culture.

